

Efficiency the way we are!

LP ENERGY
SMART LIGHTING



PRODUCTS CATALOG

LED LIGHTING SYSTEMS



ECO LINE

2019



SERIES **LLP**
POLYCARBONATE LINEAR BAR



40 | 50 watt

SERIES LLP

POLYCARBONATE LINEAR BAR

TECHNICAL DATA SHEET

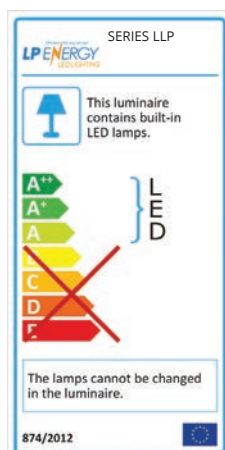
	LLP40	LLP50
Typical rated power (W)	40	50
Lamp luminous flux (lm)	5.600	7.100
Luminous efficiency (lm/W)	140	142
Weight (kg)	0,70	0,80
Dimensions LxPxH (mm)	1225 x 80 x 56	1525 x 80 x 56
Lamp body colour	White	
Correlated colour temperature (K)	5.000 K	
Colour rendering index	CRI >80	
Useful life L80B20 ⁽¹⁾	> 50.000 hours	
Input voltage (V)	200/240 V - 50/60 Hz	
Operating temperature (°C)	- 10° C ÷ + 35° C	
Photobiological hazard	Group 0 (exempted from CEI EN62471:2010 provisions)	
International Protection	IP65	
Energy class	A+	

(1) L is the percentage of light output remaining after lumen-maintenance life measured in hours. B represents the max. percentage of LED with failure within lumen-maintenance life period.

Characteristics subject to changes without prior notice. Rev. 04/2019

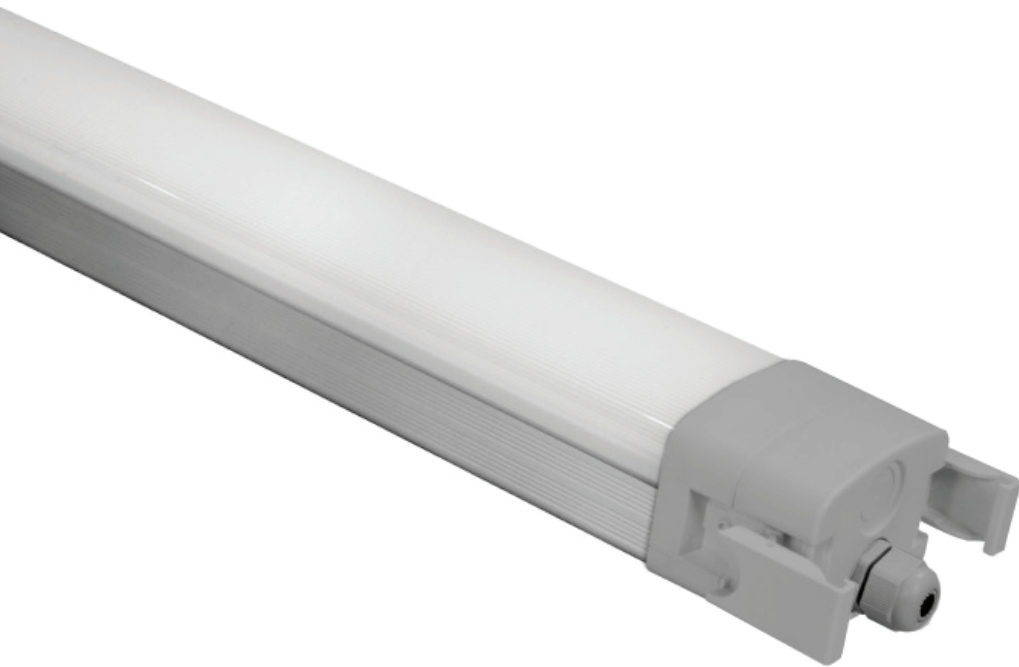
0789011285360 LPC040BI Polycarbonate linear LED ceiling light 40W IP65 5000K Mod. LLP40

0789011285377 LPC050BI Polycarbonate linear LED ceiling light 50W IP65 5000K Mod. LLP50



DIMENSIONS





SERIES **LLA**
ALUMINUM LINEAR BAR



60 Watt

SERIES LLA

ALUMINUM LINEAR BAR

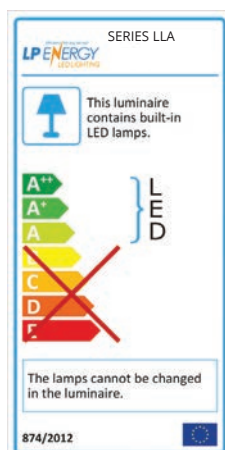
TECHNICAL DATA SHEET

	LLA60
Typical rated power (W)	60
Lamp luminous flux (lm)	9.600
Luminous efficiency (lm/W)	160
Weight (Kg)	3,10
Dimensions LxPxH (mm)	1525 x 85 x 78
Lamp body colour	Aluminum - Gray
Correlated colour temperature (K)	5.000 K
Colour rendering index	CRI >80
Useful life L80B20 ⁽ⁱ⁾	> 50.000 hours
Input voltage (V)	200/240 V - 50/60 Hz
Operating temperature (°C)	- 20° C ÷ + 40° C
Photobiological hazard	Group 0 (exempted from CEI EN62471:2010 provisions)
International Protection	IP65
Energy class	A+

(i) L is the percentage of light output remaining after lumen-maintenance life measured in hours. B represents the max. percentage of LED with failure within lumen-maintenance life period.

Characteristics subject to changes without prior notice. Rev. 04/2019

0789011285391 LPC060AL Aluminum linear LED ceiling light 60W IP65 5000K Mod. LLA50



DIMENSIONS





SERIES **UAE**
OFFICE RECESSED/CEILING



32 Watt

SERIES UAE

OFFICE RECESSED/CEILING

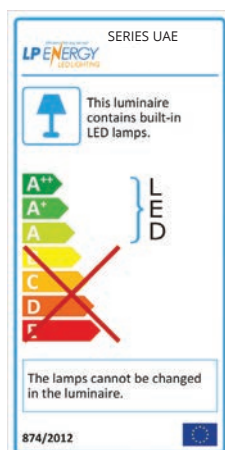
TECHNICAL DATA SHEET

	UAE32
Typical rated power (W)	32
Lamp luminous flux (lm)	3.520
Luminous efficiency (lm/W)	110
Weight (Kg)	2,75
Dimensions LxPxH (mm)	595 x 595 x 10 (Ceiling version H = 66)
Screen	Prismatic
Lamp body colour	White
Correlated colour temperature (K)	4.000 K
Colour rendering index	CRI >80
Useful life L80B20 ⁽ⁱ⁾	> 50.000 hours
Input voltage (V)	200/240 V - 50/60 Hz
Operating temperature (°C)	- 15° C ÷ + 35° C
Photobiological hazard	Group 0 (exempted from CEI EN62471:2010 provisions)
International Protection	IP20
Energy class	A+

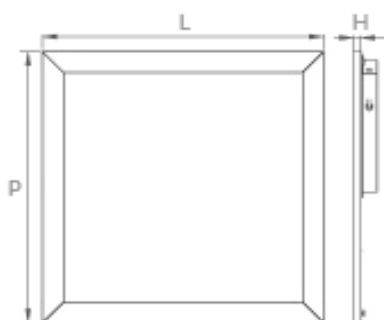
(i) L is the percentage of light output remaining after lumen-maintenance life measured in hours. B represents the max. percentage of LED with failure within lumen-maintenance life period.

Characteristics subject to changes without prior notice. Rev. 04/2019

0789011285407 LPC032BI White LED panel 32W 4000K Mod. UAE32



DIMENSIONS



Efficiency the way we are!

LP ENERGY
SMART LIGHTING



SERIES **FBE**
EXTERNAL FLOODLIGHT



50 | 100 | 150 | 200 Watt

SERIES FBE

EXTERNAL FLOODLIGHT

TECHNICAL DATA SHEET

	FBE50	FBE100	FBE150	FBE200
Typical rated power (W)	50	100	150	200
Lamp luminous flux (lm)	6.500	13.000	19.500	26.000
Luminous efficiency (lm/W)	130	130	130	130
Weight (kg)	1,55	2,55	3,83	4,87
Dimensions LxPxH (mm)	227 x 65 x 288	278 x 73 x 310	335 x 82 x 388	335 x 91 x 388
Lamp body colour	Gray			
Correlated colour temperature (K)	5.000 K			
Colour rendering index	CRI >80			
Useful life L80B20 ⁽¹⁾	> 50.000 hours			
Input voltage (V)	200/240 V - 50/60 Hz			
Operating temperature (°C)	- 20° C ÷ + 35° C			
Photobiological hazard	Group 0 (exempted from CEI EN62471:2010 provisions)			
International Protection	IP65			
Energy class	A+			

(1) L is the percentage of light output remaining after lumen-maintenance life measured in hours. B represents the max. percentage of LED with failure within lumen-maintenance life period.

Characteristics subject to changes without prior notice. Rev. 04/2019

DIMENSIONS

